



Public Domain



Processional Cross

late 14th century

Spanish

Object Details

Title: Processional Cross

Date: late 14th century

Culture: Spanish

Medium: Champlevé enamel, copper-gilt

Dimensions: Overall: 24 1/8 x 18 1/8 in. (61.3 x 46 cm)

Classification: Enamels-Champlevé

Credit Line: Rogers Fund, 1936

Accession Number: 36.134

Provenance



Exhibition History



The Cloisters Museum & Gardens. "Spanish Medieval Art: loan exhibition in honor of Dr. Walter W. S. Cook," December 15, 1954–January 30, 1955.

References



. New York: Institute of Fine Arts Alumni Association, 1954. no. 16.

. Oklahoma City: Oklahoma Museum of Art, 1985. no. 53, pp. 177-179.

Timeline of Art History



Timelines

Iberian Peninsula, 1000-1400 A.D.



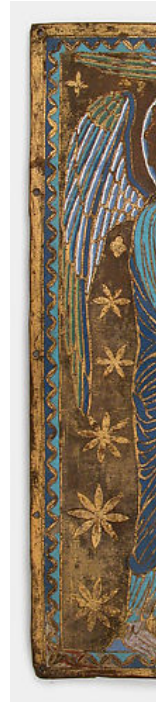
Lamp or Censer

Date: 14th century
 Accession Number: 17.190.827
 14th century



Seal

Date: 14th century
 Accession Number: 17.190.797
 14th century



Plaque v

Date: ca. 12
 Accession
 ca. 1200–12



Categories

Departments

Medieval Art

Provenance Research Project

Object Type / Material

Champlevé Copper Crosses Enamels

Gilt Metal

Geographic Location

Europe Spain

The Met Cloisters

99 Margaret Corbin Drive
Fort Tryon Park
New York, NY 10040
Phone: 212-923-3700

About The Met

Mission and history

Curatorial departments

Conservation

Press

Support

Membership

Host an event

Corporate Support

Follow us



Join our newsletter

Sign Up

[Site Index](#)

[Terms and Conditions](#)

[Privacy Policy](#)

[Contact Information](#)

